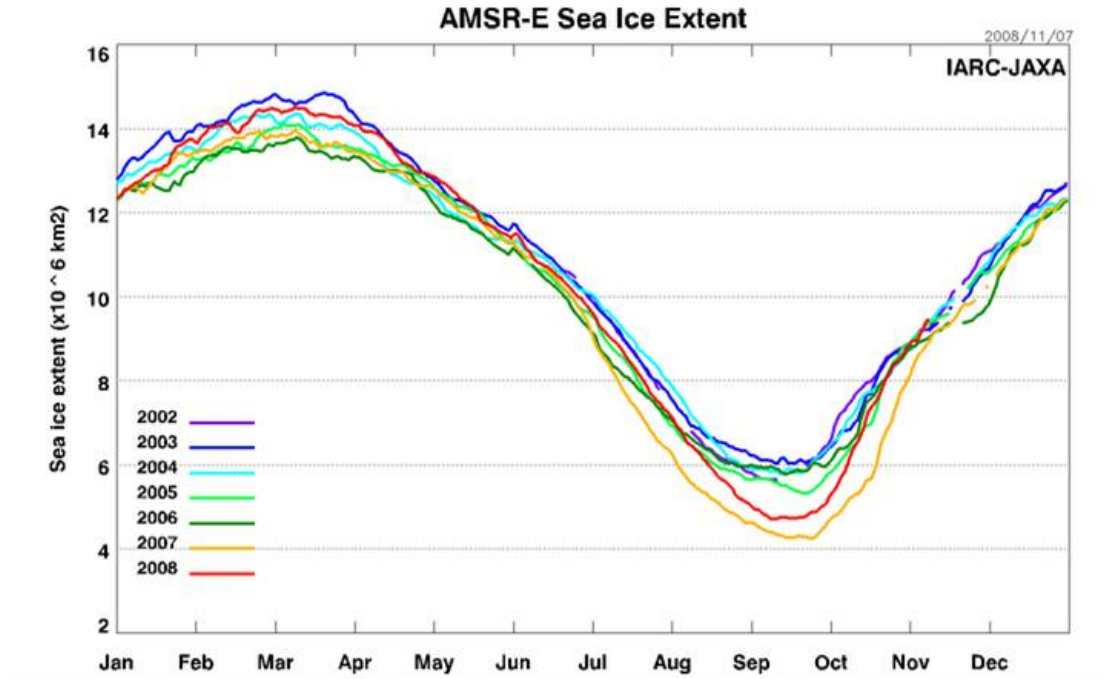


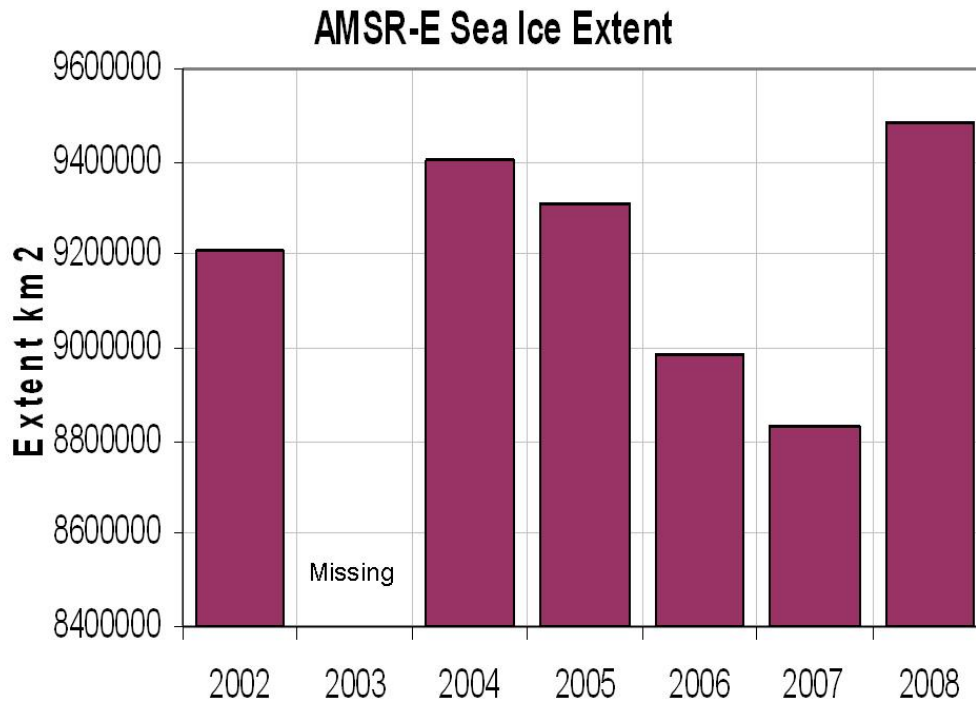
Arctic Ice Extent Now Likely Highest Level Since 2002

By Joseph D'Aleo

The latest daily arctic sea ice extent chart from [JIS](#) shows the current year ice extent at the highest level in the record back to 2002. (2003 was missing).



The daily extents on November 7 look like this:



This represents an increase of 655,781 square kilometers over last November 7 or 7.4%. Side-by-side images from the [Cryosphere](#) show there is more ice on both the Pacific and Atlantic side this year. This is 44 days before the start of the Northern Hemisphere winter and 5 months before it will peak.

