

California Drought, Presidential Prognostications, and “The Pause”



Bob Endlich

bendlich@msn.com

14 January 2015

Cruces Atmospheric Sciences Forum

Mr. Obama said, “A changing climate means that weather-related disasters like droughts, wildfires, storms, floods are potentially going to be costlier and they’re going to be harsher.”



<http://www.nytimes.com/2014/02/15/us/politics/obama-to-announce-aid-for-drought-racked-california.html>

Mr. Obama said, “A changing climate means that weather-related disasters like droughts, wildfires, storms, floods are potentially going to be costlier and they’re going to be harsher.”

Droughts -- Rainfall

Wildfires

Storms -- Tornadoes and Hurricanes

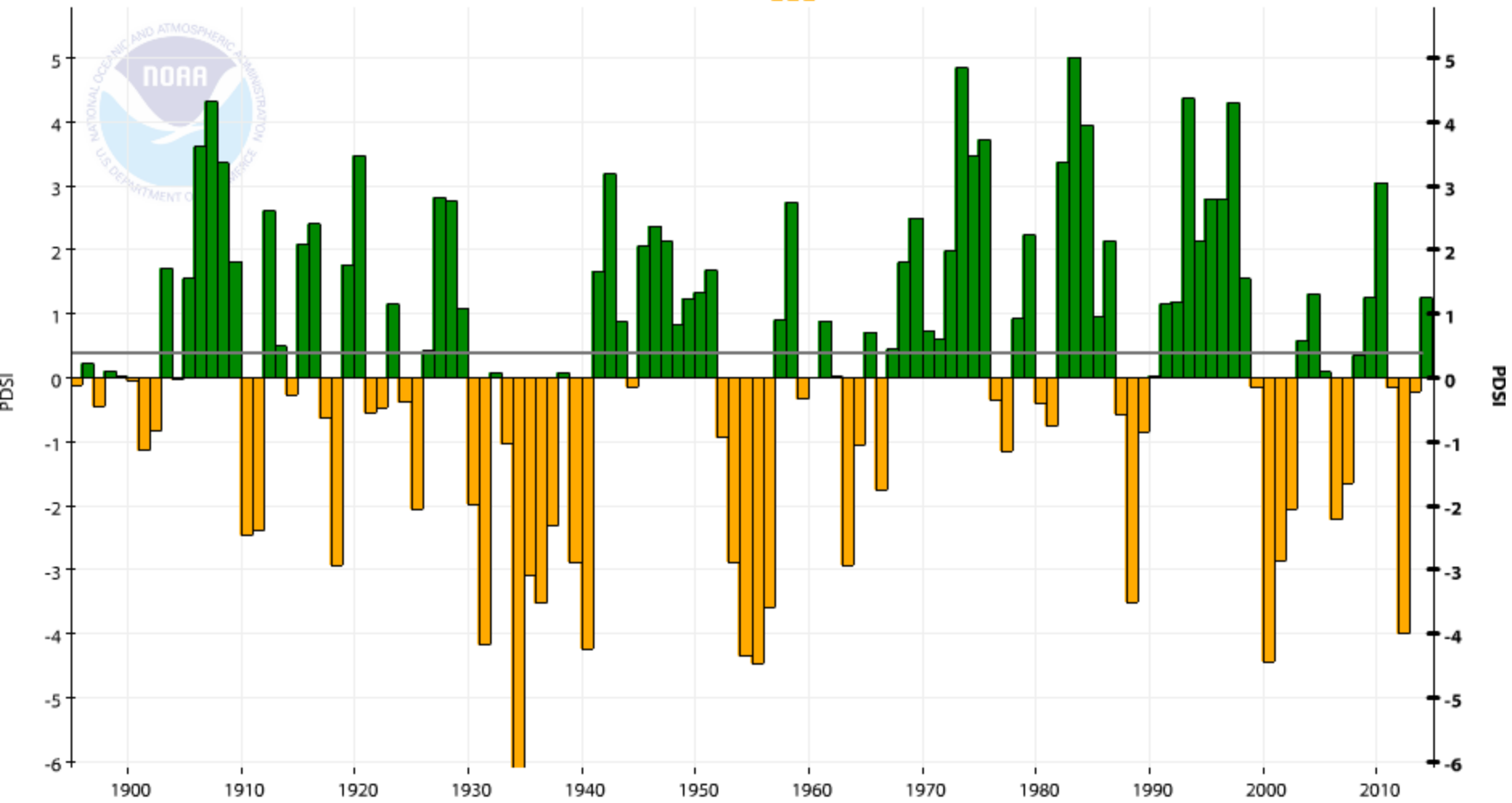
Floods

<http://www.nytimes.com/2014/02/15/us/politics/obama-to-announce-aid-for-drought-racked-california.html>

CONUS Palmer Drought Severity Index 1895-2014 <http://www.ncdc.noaa.gov/cag/>

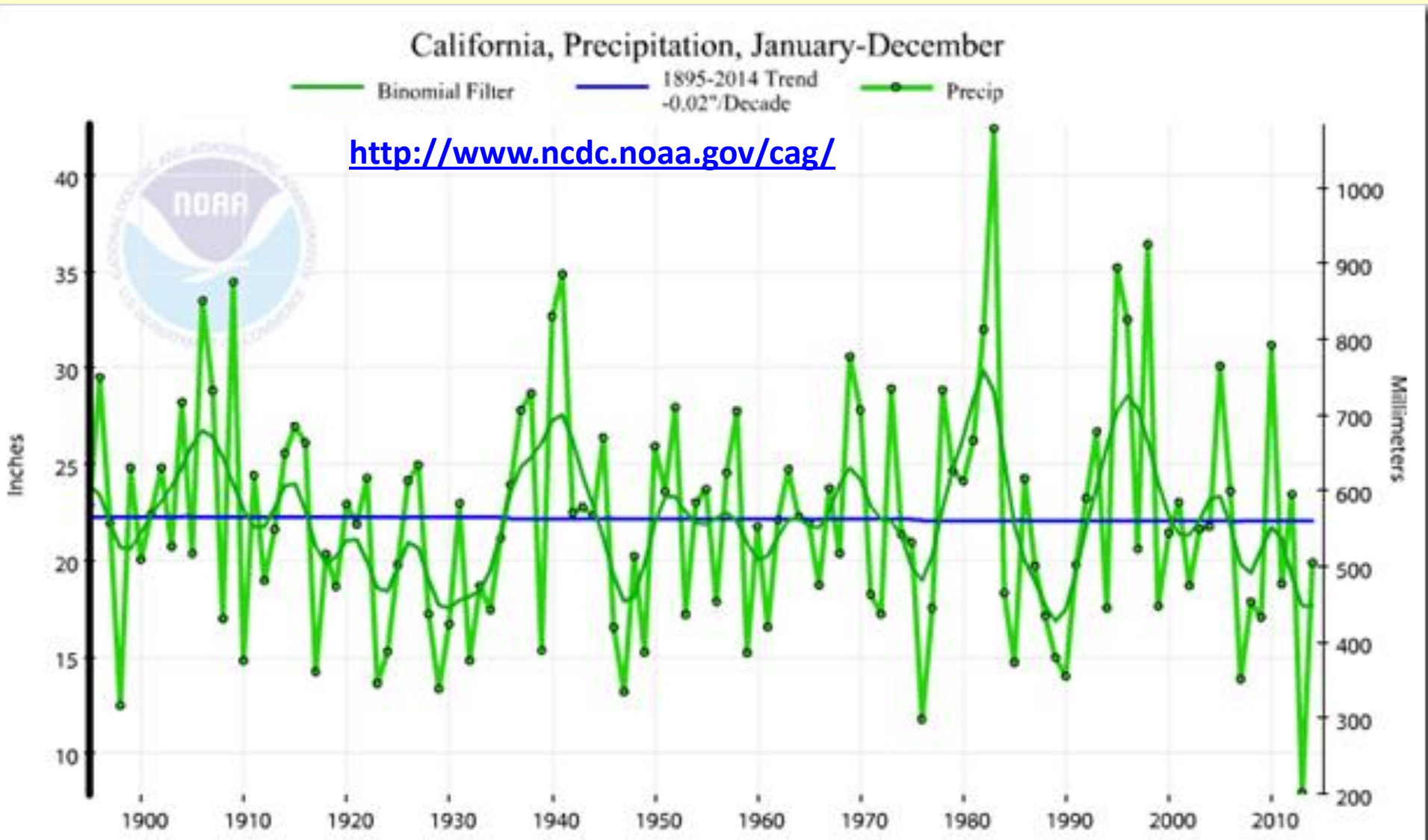
Contiguous U.S., PDSI, January-December

— 1901-2000 Avg: 0.40 PDSI



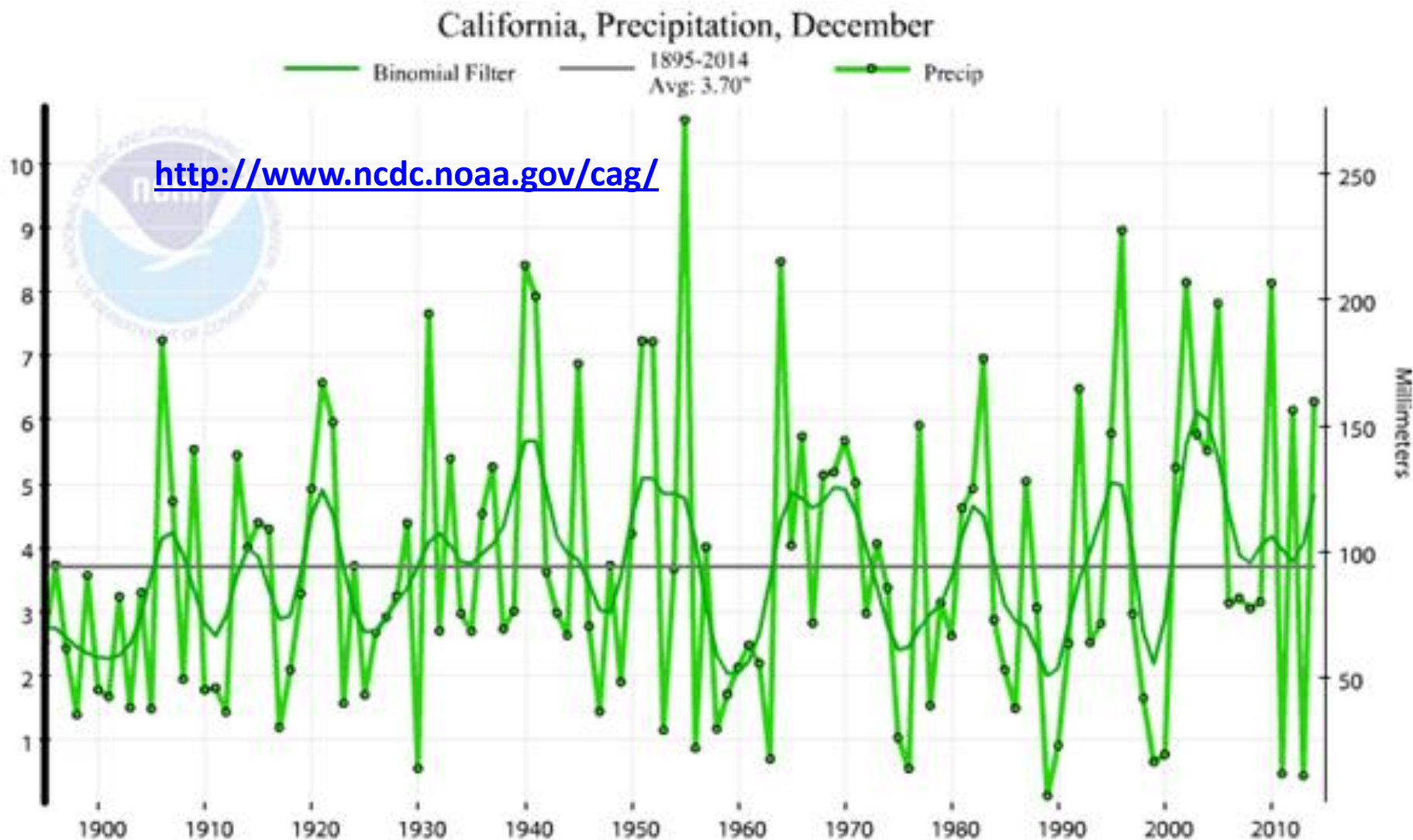
Each Year's California Rainfall from 1895 to 2014: NCDC's "Climate at a Glance" page

The binomial filter helps visualize the underlying trend.



Each December's Rainfall from 1895 to 2014, from NCDL's "Climate at a Glance" page.

The binomial filter helps visualize the underlying trend.

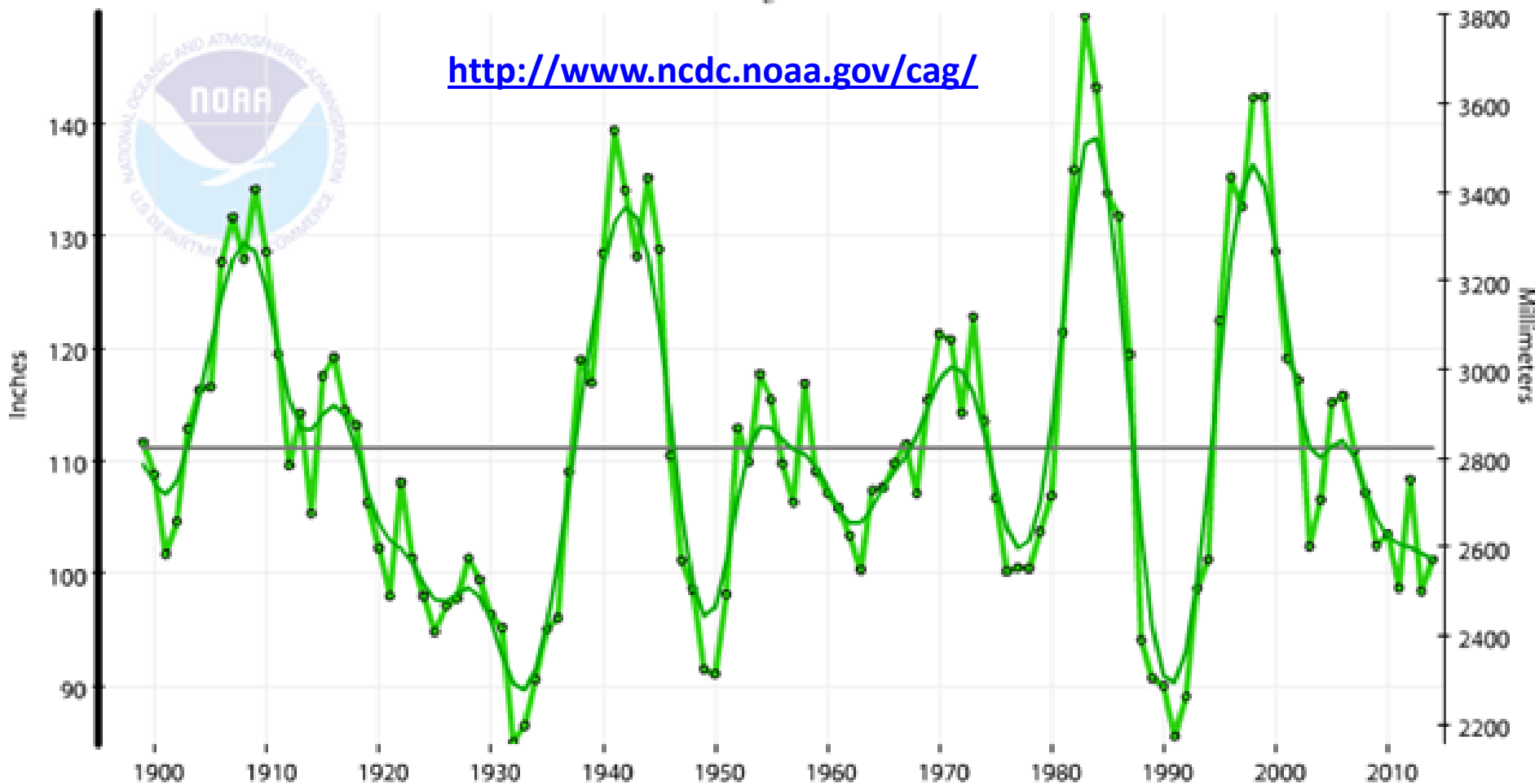


How unique is California's 2009- 2014 drought in instrumental history?

California, Precipitation, 60-Month Period Ending in December

— Binomial Filter — 1899-2014 Avg: 111.14" —●— Precip

<http://www.ncdc.noaa.gov/cag/>



http://www.nifc.gov/fireInfo/fireInfo_main.html



NATIONAL INTERAGENCY **FIRE CENTER**

[Aviation](#) [Radios](#) [Fire Information](#) [Fire Shelters](#) [NICC](#) [Policies](#) [Prevention/Education](#) [Programs](#) [Safety](#)

FIRE INFORMATION

NEWS

[National Fire News and News Releases](#)

[Incident Management Situation Report \(PDF\)](#)

[INCIWeb \(external link\)](#)

[Statistics](#)

[PIO Bulletin Board](#)

MULTIMEDIA

[Podcasts](#)

Fire Information

[>> National Fire News - Current Wildfires](#)

National Preparedness Level 1 (September 29, 2014 at 10 a.m. MDT)
(On a scale from 1 to 5)

Current hours for the National Fire Information Center are
8:00 am - 4:30 pm (MST), Monday - Friday
208-387-5050

In the Spotlight

[Sit Report and National](#)

[Current Fire Season C](#)

[Mobilization Guide, Re](#)

[National Multi-Agency](#)

[Partners at NIFC](#)

[PIO Bulletin Board](#)

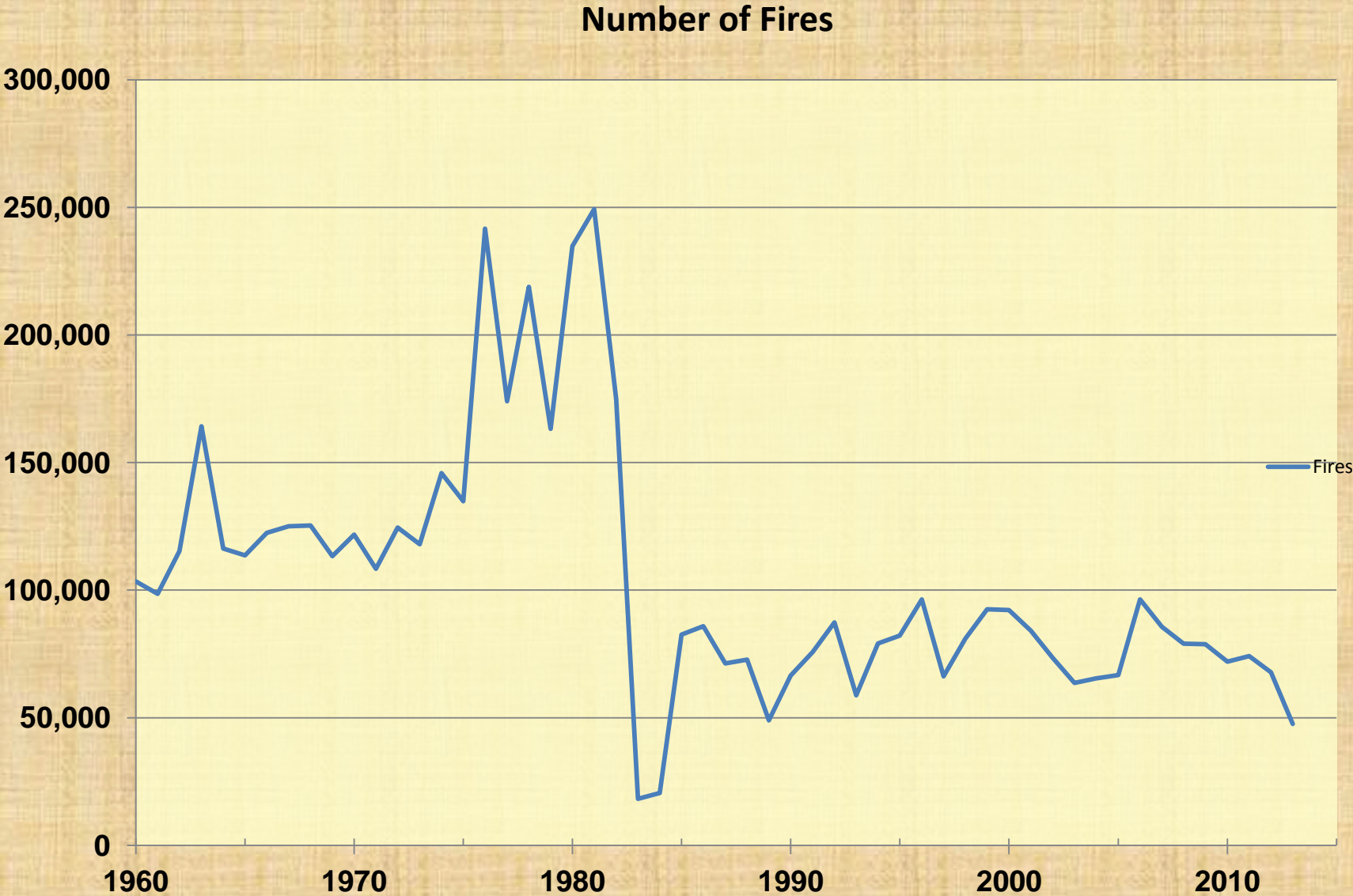
[Multimedia](#)

Total Wildland Fires and Acres (1960-2009)

Figures prior to 1983 may be revised as NICC verifies historical data.

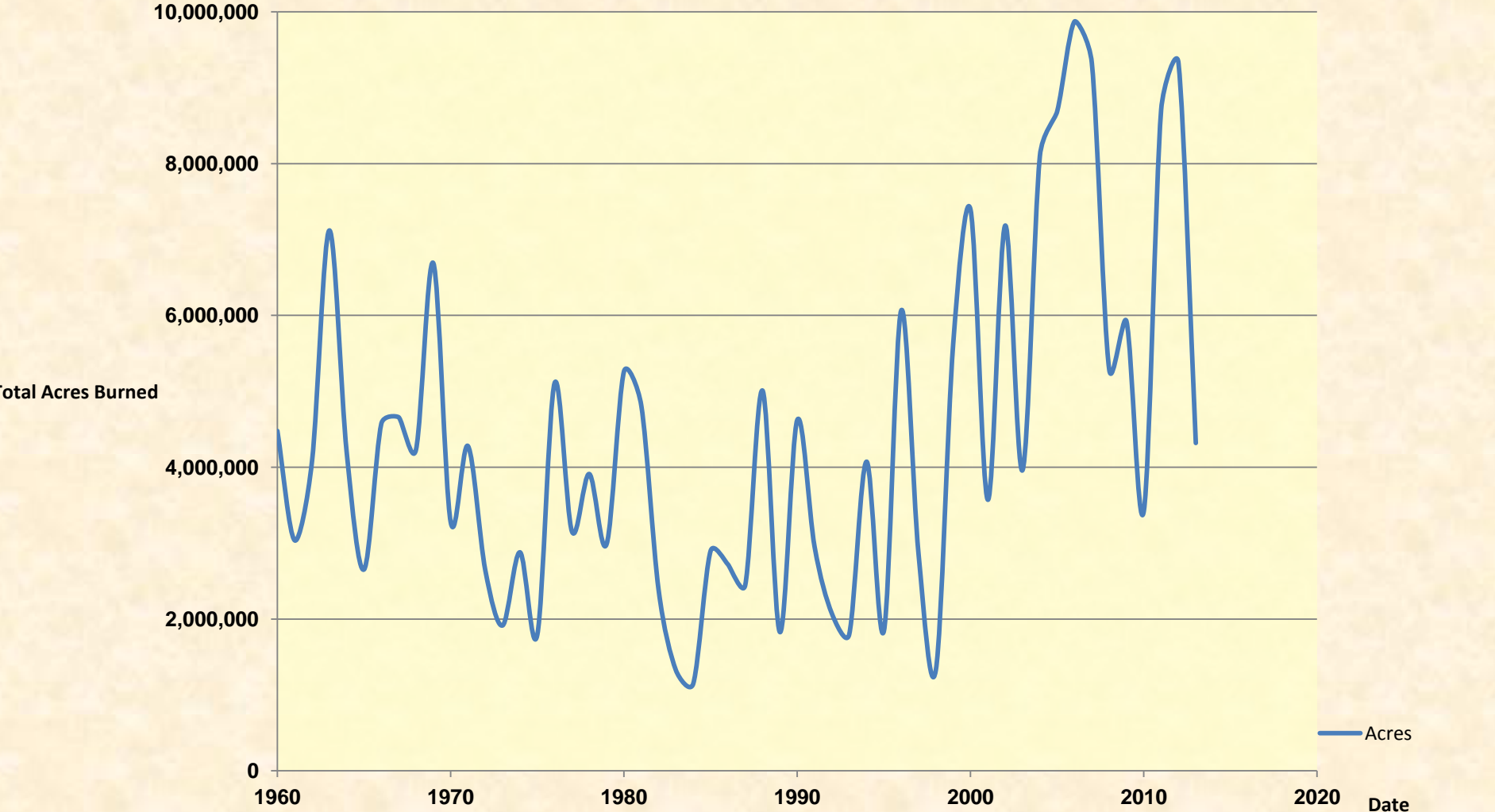
Year	Fires	Acres
2013	47,579	4,319,546
2012	67,774	9,326,238
2011	74,126	8,711,367
2010	71,971	3,422,724
2009	78,792	5,921,786
2008	78,979	5,292,468
2007	85,705	9,328,045
2006	96,385	9,873,745
2005	66,753	8,689,389
2004	65,461	*8,097,880
2003	63,629	3,960,842

The number of fires from the **Fire Agency** home page shows the number of fires is down since data began in 1960.

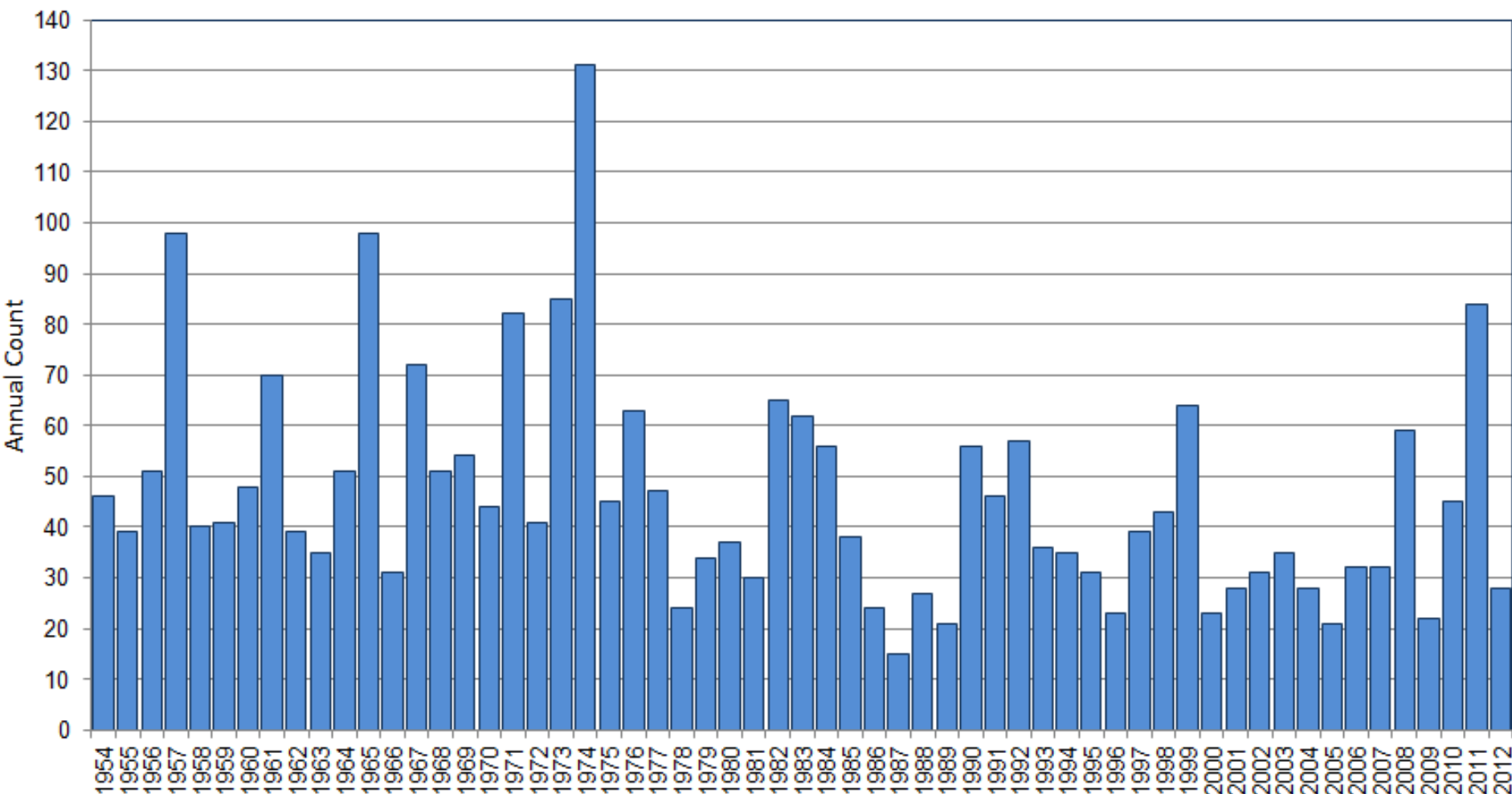


Fire Agency data shows that the number of acres burned 1960-2013 has changed little since the data began in 1960

Number of Acres Burned

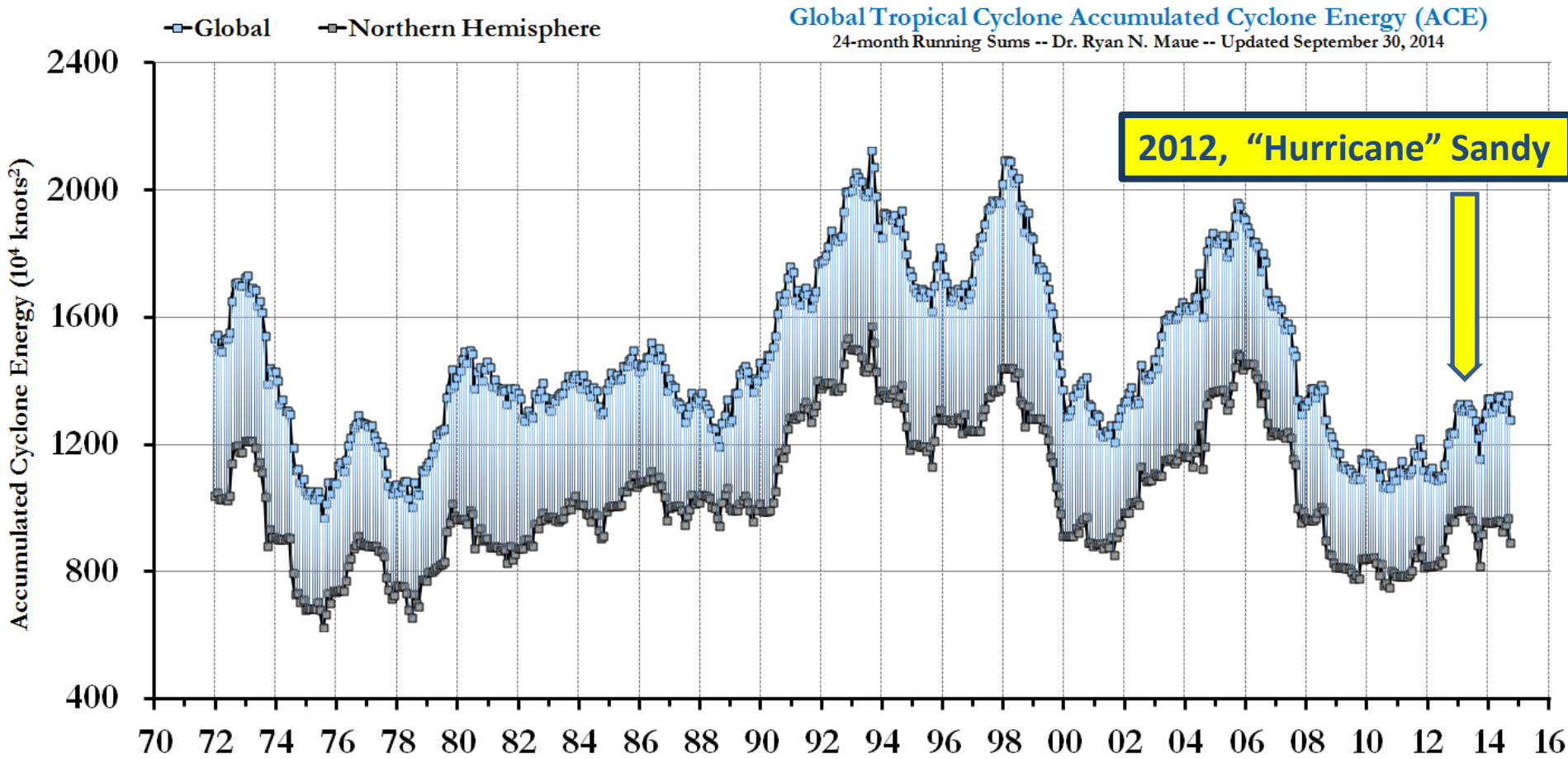


U.S. Annual Count of Strong to Violent Tornadoes (F3+), 1954 through 2012



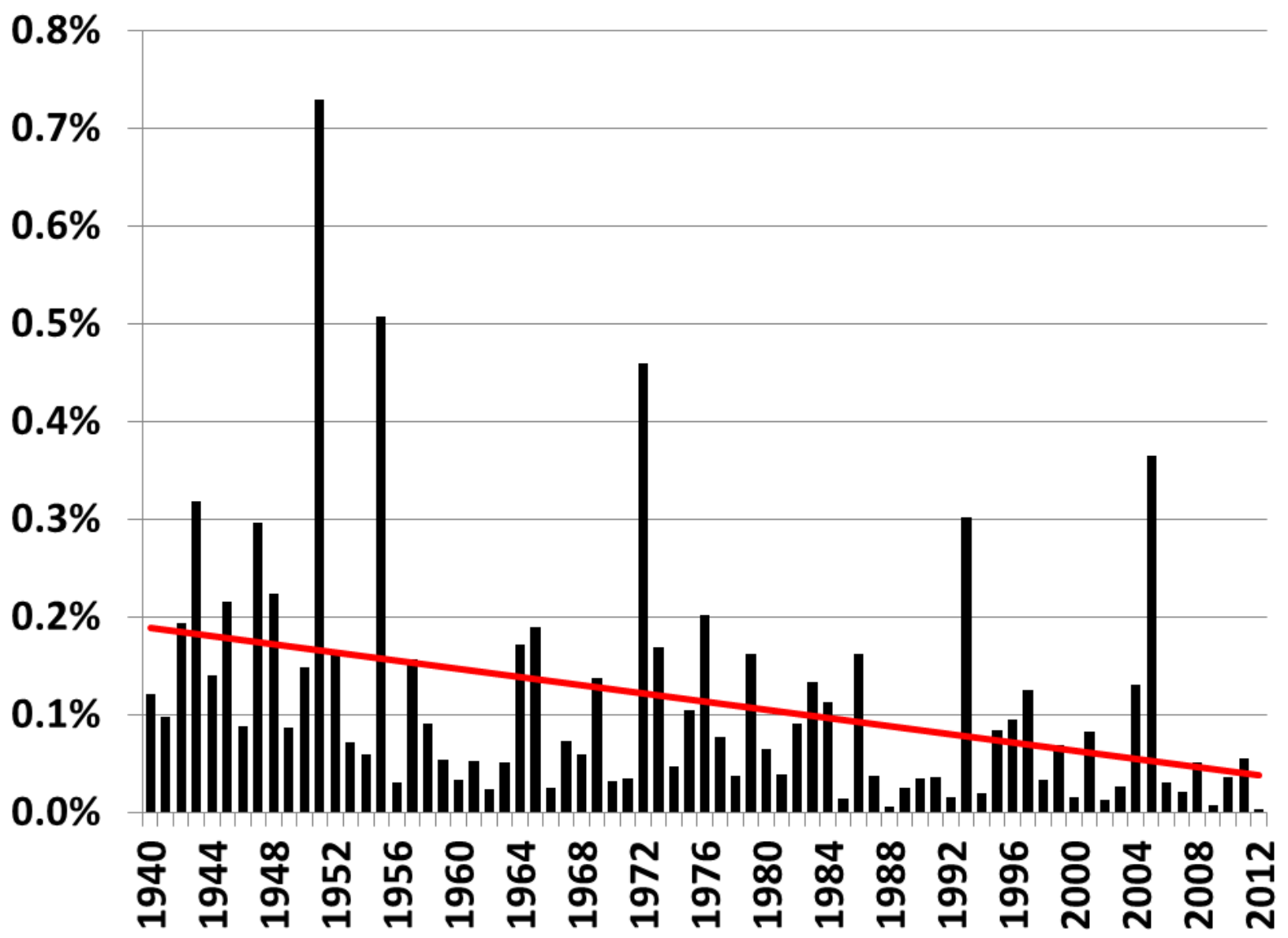
Source: NOAA/NWS Storm Prediction Center

Accumulated Cyclone Energy measures the number and strength of Tropical Storms and Hurricanes, every six hours. Overall trend is down since the 1990s



(Updated 30 Sept 2014) Last 4-decades of Global and Northern Hemisphere Accumulated Cyclone Energy: 24 month running sums. The year indicated represents the value of ACE through the previous 24-months for the Northern Hemisphere (bottom line/gray boxes) and the entire global (top line/blue boxes). Hurricane Sandy 2012 (Yellow Arrow)

US Flood Damage as Proportion of GDP (2012\$)



GRAPH THAT MAKES A MOCKERY OF WARMING

<http://www.dailymail.co.uk/sciencetech/article-2906874/Volcanoes-cooling-Earth-Aerosols-small-eruptions-reduced-global-temperatures-tropical-rainfall.html>

