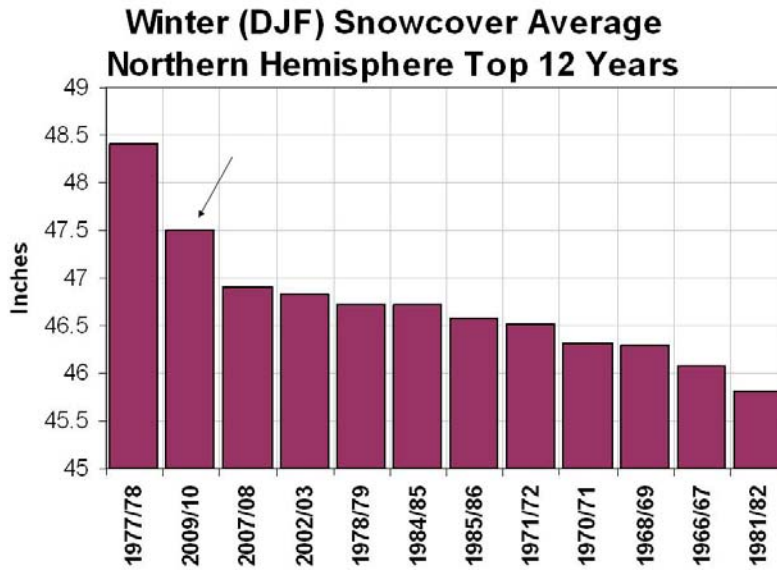


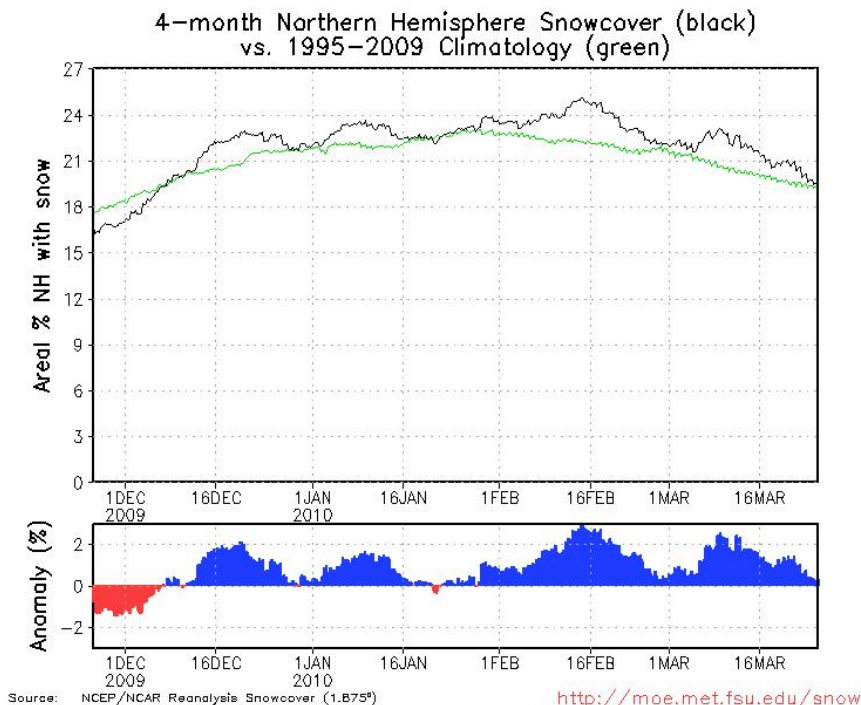
Snow Season Off to a Roaring Start

By Joseph D'Aleo

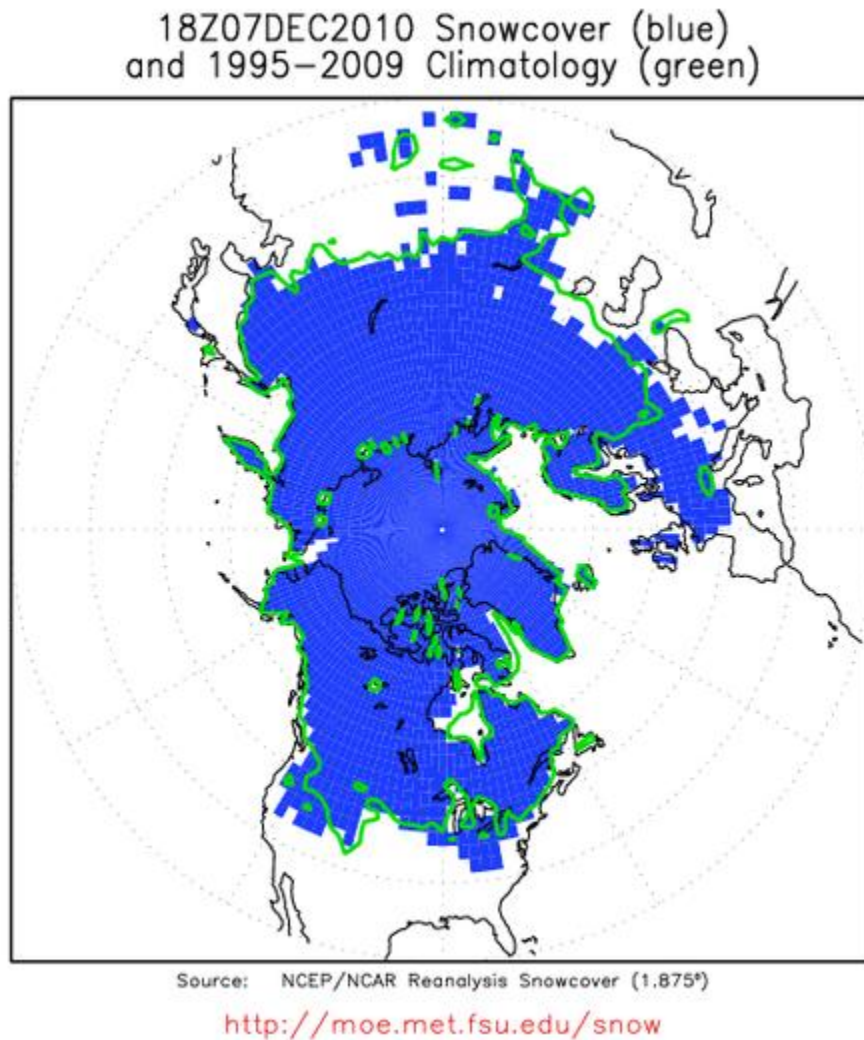
Last year the Northern Hemispheric snowcover was the second highest in the NOAA snow history back to the mid 1960s. It trailed only the legendary 1977/78 winter. It fell just ahead of 2007/08, pushing it to third place. The winter of 2002/03 dropped to fourth place and the bitter winter of 1978/79 fifth.



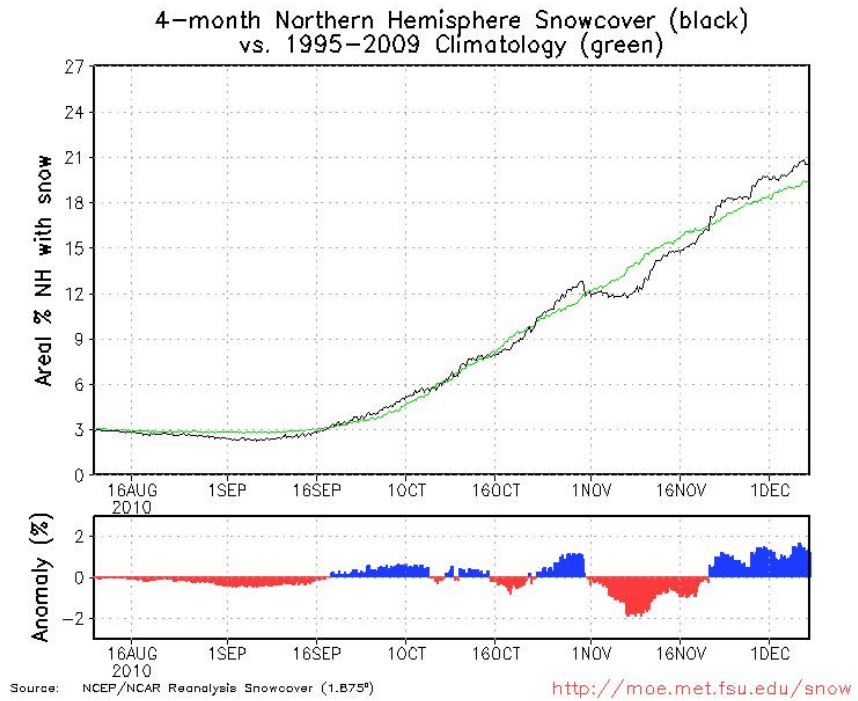
All through last winter the snowfall was above normal from the end of the first week of December through the third week of March.



The heavy snows in Europe and Asia and now beginning in North America have this year off to a good start again.



You can see the recent snow has the hemispheric snowcover above normal a few weeks earlier than last year.



The pattern will continue cold across the western parts of Canada, much of United States and across Eurasia. A strong blocking high pressure will push back from the North Atlantic to the Davis Straits. Snow will be heavy along the edges of the cold air and near the unfrozen Great Lakes where many feet will accumulate.

